

*Handwritten signature*

4/113

Orchestra Simfonica  
CONSTANTA 430

Violin I

PULT

Two Flute Concerto

zDomenico Cimarosa  
(1749 ~ 1801)

BIBLIOTHECA  
Nr. 66522  
BIBLIOTHECA M. L. C. A. L.



Seoul Junior Philharmonic Orchestra

Violin I

Two Flute Concerto

Domenico Cimarosa  
(1749-1801)

Allegro

Handwritten musical score for Violin I of Domenico Cimarosa's Two Flute Concerto. The score is written on ten staves, numbered 1 through 39. It features a key signature of one sharp (F#) and a common time signature (C). The tempo is marked 'Allegro'. The notation includes various musical symbols such as notes, rests, beams, slurs, and dynamic markings like 'f' (forte) and 'p' (piano). There are also handwritten annotations, including a large 'V' at the top right and several checkmarks and arrows indicating specific measures or phrasing. The score is written in a clear, legible hand, typical of a composer's or arranger's manuscript.

## Violin I

2.

Handwritten musical score for Violin I, measures 41 to 83. The score is written on ten staves, each beginning with a treble clef and a key signature of one sharp (F#). The notation includes various musical symbols such as notes, rests, beams, and slurs. Dynamic markings include *f* (forte), *p* (piano), *pp* (pianissimo), and *mf* (mezzo-forte). Performance instructions like *V* (vibrato) and *VTN* (Vibrato Tasto Normale) are present. The score concludes with the marking *V. 5* at the bottom right.

Measures 41-44: *f* (forte)

Measures 45-48: *p* (piano), *V* (vibrato)

Measures 49-52: *p* (piano), *V* (vibrato), *VTN* (Vibrato Tasto Normale)

Measures 53-56: *pp* (pianissimo), *p* (piano), *V* (vibrato)

Measures 57-60: *pp* (pianissimo), *p* (piano), *V* (vibrato)

Measures 61-64: *V* (vibrato)

Measures 65-68: *f* (forte), *V* (vibrato)

Measures 69-72: *mf* (mezzo-forte), *V* (vibrato)

Measures 73-76: *mf* (mezzo-forte), *V* (vibrato)

Measures 77-80: *p* (piano), *V* (vibrato)

Measures 81-83: *p* (piano), *V* (vibrato)

*V. 5*

3.

## Violin I

Handwritten musical score for Violin I, measures 87 to 124. The score is written on ten staves, each beginning with a measure number and a key signature of one sharp (F#). The notation includes various musical symbols such as notes, rests, slurs, and dynamic markings.

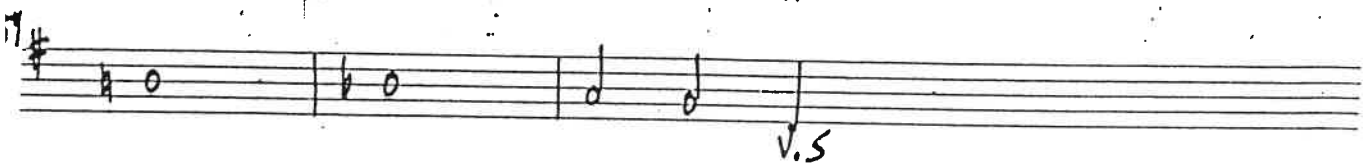
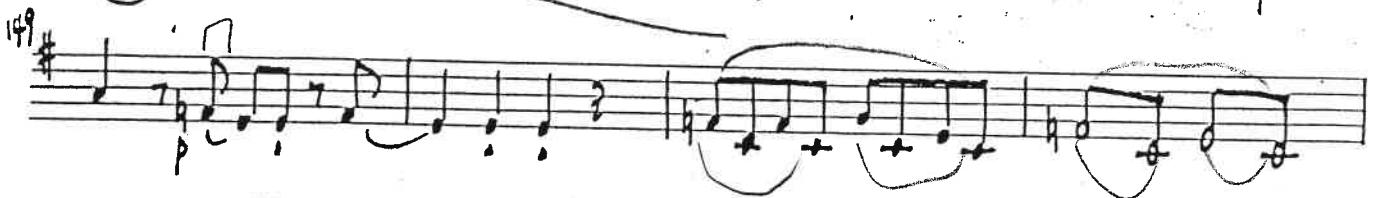
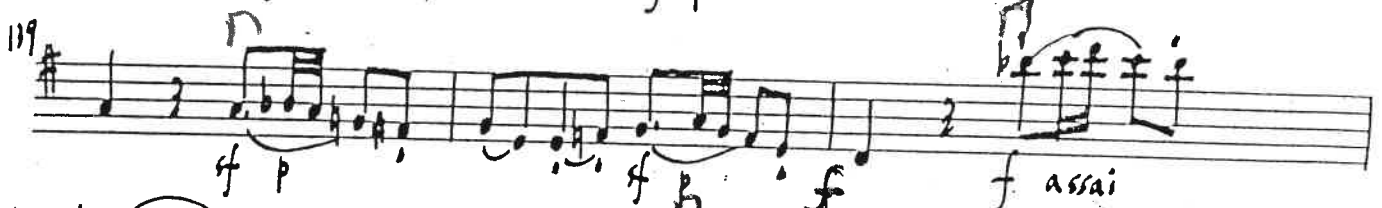
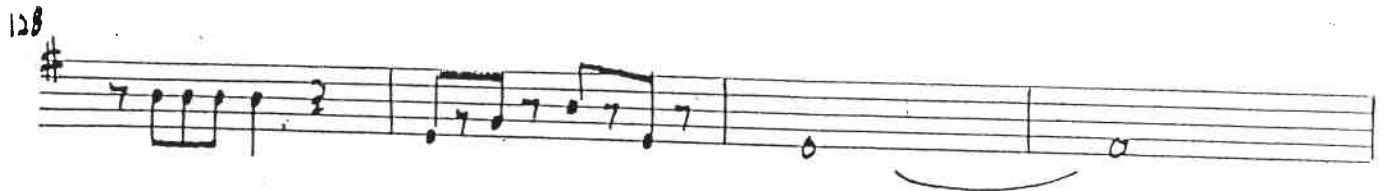
Measures and markings:

- 87: *p*
- 91: *sf p*
- 95: *V V V V*
- 99: *V*
- 103: *mf*
- 107: *f assai*
- 110: *V M*
- 113: *V V V V*
- 117: *V*
- 120: *pp*
- 124: *V V V V*



## Violin I

4.



Handwritten musical score for Violin I, measures 160 to 198. The score is written on ten staves, each beginning with a treble clef and a key signature of one sharp (F#).

Measures and markings include:

- 160: *f*, *p*
- 163: *f*, *pp*
- 166: *pp*
- 170: *p*, *sf*, *p*, *sf*, *p*, *sf*, *p*
- 174: *sf*, *p*, *sf*, *p*, *fp*, *fp*
- 178: *fp*, *mf*
- 181: *f* *assai*
- 185: *p*
- 189: *p*, *pp*
- 194: *p*
- 198: *pp*

Other markings include *V* (breath mark), *3* (triplets), *4* (quadruplets), *mf* (mezzo-forte), and various slurs and phrasing slurs.

## Violin I

6.

Handwritten musical score for Violin I, measures 202 to 243. The key signature is one sharp (F#).

Measures 202-205: Melodic line with rests and eighth notes.

Measures 206-209: Melodic line with eighth notes, slurs, and accents.

Measures 210-213: Melodic line with eighth notes, slurs, and accents.

Measures 214-217: Melodic line with eighth notes, slurs, and accents.

Measures 218-221: Melodic line with eighth notes, slurs, and accents.

Measures 222-225: Melodic line with eighth notes, slurs, and accents.

Measures 226-229: Melodic line with eighth notes, slurs, and accents.

Measures 230-233: Melodic line with eighth notes, slurs, and accents.

Measures 234-237: Melodic line with eighth notes, slurs, and accents.

Measures 238-241: Melodic line with eighth notes, slurs, and accents.

Measures 242-243: Melodic line with eighth notes, slurs, and accents.

Dynamic markings include *p*, *f*, *mf*, *pp*, and *cresc*. Performance instructions include *acc* (accents), *v* (accents), and *v.s* (vibrato).

Handwritten musical score for "The Rose Tree". The score is written on six staves, each beginning with a treble clef and a key signature of one sharp (F#). The measures are numbered 247, 251, 254, 257, 261, and 264. The music features a variety of note values, including eighth and sixteenth notes, as well as rests. Dynamic markings such as *f* (forte), *mf* (mezzo-forte), and *p* (piano) are present. Performance instructions include "rit" (ritardando) and "cresc." (crescendo). A circled annotation "cresc. disk" is written over measures 257 and 258. The score concludes with a double bar line at the end of the sixth staff.



Largo in 3

Handwritten musical score for Violin I and II, measures 1-42. The score is in 3/4 time, key of B-flat major. It features various dynamics (p, f, fp, sf, pp), articulations (accents, slurs, staccato), and performance instructions (poco rit, a tempo, v.s.).

Measures 1-6: Violin I (treble clef) and Violin II (bass clef) play a melodic line. Dynamics: *f*, *p*, *f*, *p*, *f*, *p*. Measure 6 has a *staccato* marking.

Measures 7-10: Violin I and II play a rhythmic pattern. Dynamics: *p*, *f*, *p*. Measure 10 has a *staccato* marking.

Measures 11-14: Violin I and II play a rhythmic pattern. Dynamics: *p*, *f*, *p*. Measure 14 has a *staccato* marking.

Measures 15-18: Violin I and II play a rhythmic pattern. Dynamics: *p*, *f*, *p*. Measure 18 has a *staccato* marking.

Measures 19-22: Violin I and II play a rhythmic pattern. Dynamics: *fp*, *fp*, *fp*. Measure 22 has a *staccato* marking.

Measures 23-26: Violin I and II play a rhythmic pattern. Dynamics: *fp*, *fp*, *f*. Measure 26 has a *staccato* marking.

Measures 27-30: Violin I and II play a rhythmic pattern. Dynamics: *f*, *fp*, *f*. Measure 30 has a *staccato* marking.

Measures 31-34: Violin I and II play a rhythmic pattern. Dynamics: *p*, *f*, *p*, *sf*. Measure 34 has a *staccato* marking.

Measures 35-38: Violin I and II play a rhythmic pattern. Dynamics: *pp*, *pp*, *pp*. Measure 38 has a *staccato* marking.

Measures 39-42: Violin I and II play a rhythmic pattern. Dynamics: *pp*, *pp*, *pp*. Measure 42 has a *staccato* marking.

Performance instructions: *poco rit* (measures 35-38), *a tempo* (measures 39-42), *v.s.* (measure 42).

7.

Handwritten musical score for four staves. The first staff is marked with a checkmark and the number 44. The second staff is marked with 48. The third staff is marked with 52. The fourth staff is marked with 56. The music is in 6/8 time and features various dynamics including *fp* (fortissimo piano) and *p* (piano). The piece concludes with the instruction "attacca il Rondo".

Rondo.

III

2 Allegretto ma non tanto

Handwritten musical score for the Rondo section, consisting of six staves. The first staff is marked with a circled *p* and the number 2. The second staff is marked with 5. The third staff is marked with 9. The fourth staff is marked with 13. The fifth staff is marked with 18 and includes the marking *vn* (violin). The sixth staff is marked with 22. The music is in 6/8 time and features various dynamics including *p* (piano), *pp* (pianissimo), and *NO* (no). The piece concludes with the instruction "attacca il Rondo".

## Violin I

10.

Handwritten musical score for Violin I, measures 26 to 70. The score is written on ten staves, each beginning with a treble clef and a key signature of one sharp (F#). The notation includes various musical symbols such as notes, rests, accidentals, and dynamic markings.

Measures 26-30: The first staff (measures 26-30) features a series of eighth notes and a final measure with a forte (*f*) dynamic marking and a sixteenth-note run.

Measures 30-40: The second staff (measures 30-40) continues the melodic line with a forte (*f*) dynamic marking and a sixteenth-note run.

Measures 40-44: The third staff (measures 40-44) shows a melodic line with a forte (*f*) dynamic marking and a sixteenth-note run.

Measures 44-48: The fourth staff (measures 44-48) features a melodic line with a forte (*f*) dynamic marking and a sixteenth-note run.

Measures 48-53: The fifth staff (measures 48-53) shows a melodic line with a forte (*f*) dynamic marking and a sixteenth-note run.

Measures 53-57: The sixth staff (measures 53-57) features a melodic line with a forte (*f*) dynamic marking and a sixteenth-note run.

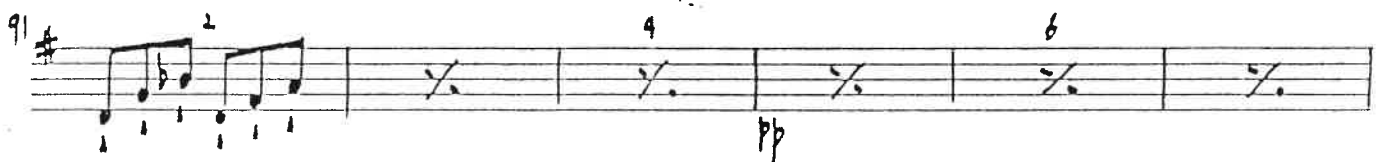
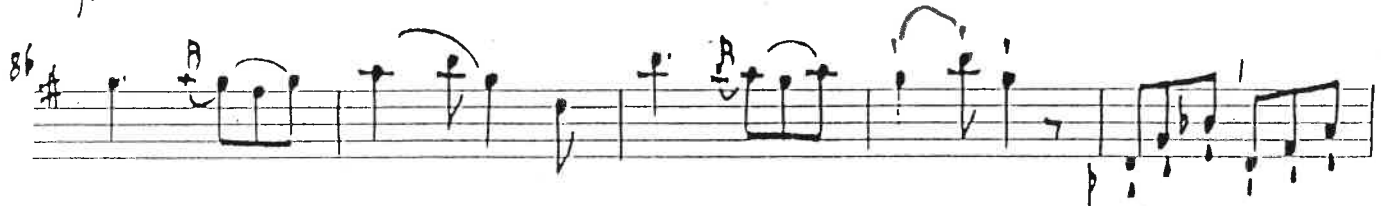
Measures 57-61: The seventh staff (measures 57-61) shows a melodic line with a forte (*f*) dynamic marking and a sixteenth-note run.

Measures 61-65: The eighth staff (measures 61-65) features a melodic line with a forte (*f*) dynamic marking and a sixteenth-note run.

Measures 65-70: The ninth staff (measures 65-70) shows a melodic line with a forte (*f*) dynamic marking and a sixteenth-note run.

Measure 70: The tenth staff (measure 70) shows a melodic line with a forte (*f*) dynamic marking and a sixteenth-note run.

The score concludes with the text "V.S." (Vincenzo Scacchi) written below the final staff.





## Violin I

12

Handwritten musical score for Violin I, measures 125 to 145. The score is written on five staves, each beginning with a treble clef and a key signature of one sharp (F#).

Measure 125: Starts with a whole note F#4, followed by a half note G#4, a quarter note A4, and a quarter note B4. A long slur covers the rest of the measure, ending with a half note C5. Dynamics: *p*. A handwritten '7' is above the first quarter note.

Measure 131: Starts with a quarter note D5, followed by an eighth note E5, a quarter note F#5, and a quarter note G5. A long slur covers the rest of the measure, ending with a half note A5. Dynamics: *pp*. A handwritten '7' is above the first quarter note.

Measure 136: Starts with a quarter note B4, followed by an eighth note C5, a quarter note D5, and a quarter note E5. A long slur covers the rest of the measure, ending with a half note F#5. Dynamics: *p*. A handwritten '7' is above the first quarter note.

Measure 141: Starts with a quarter note G5, followed by an eighth note A5, a quarter note B5, and a quarter note C6. A long slur covers the rest of the measure, ending with a half note D6. Dynamics: *f*. A handwritten '7' is above the first quarter note.

Measure 145: Starts with a quarter note E6, followed by an eighth note F#6, a quarter note G6, and a quarter note A6. A long slur covers the rest of the measure, ending with a half note B6. Dynamics: *f*. A handwritten '7' is above the first quarter note.

Additional markings include a handwritten '7' above the first quarter note of measures 125, 131, 136, 141, and 145. A handwritten '7' is also present below the first quarter note of measure 136. A handwritten '7' is present below the first quarter note of measure 141. A handwritten '7' is present below the first quarter note of measure 145. A handwritten '7' is present below the first quarter note of measure 145.